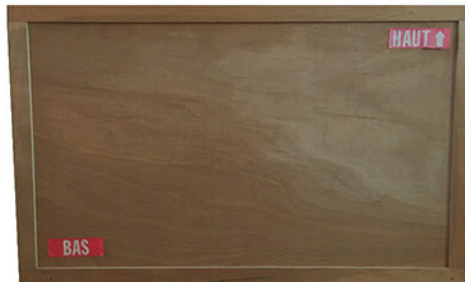
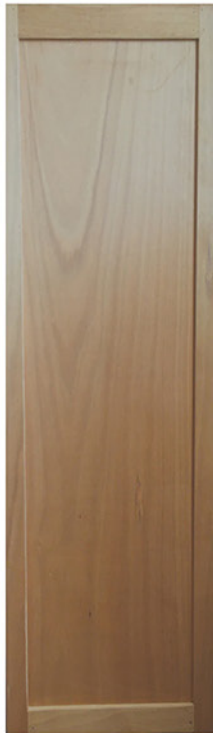
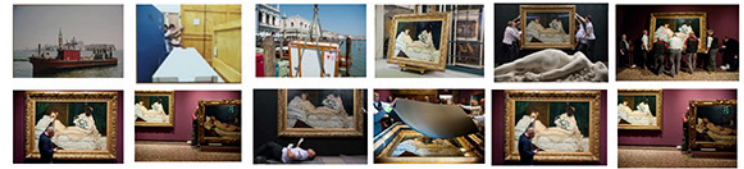


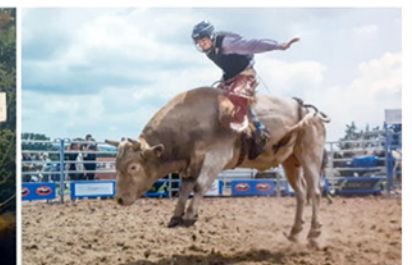
**13 CAISSES
EN BOIS**



FICHE TECHNIQUE EXPOSITION VOYAGE VOYAGES #1



12 formats de 20 cm x 30 cm



4 formats de 75 cm x 220 cm



VOYAGE VOYAGES # 1 - NICOLAS KRIEF
LE VOYAGE D'OLYMPIA / VOYAGES IMMOBILES
PHOTOGRAPHIES PRÊTÉES PAR LE CONSEIL DÉPARTEMENTAL 72



