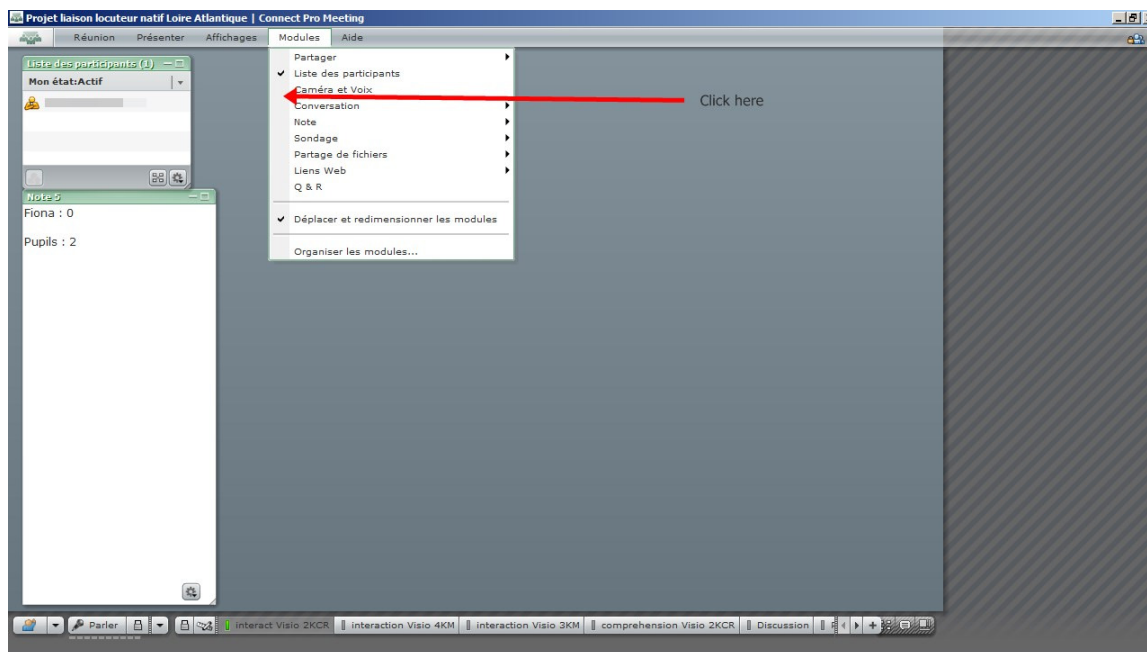


Using your webcam on your ADOBE CONNECT virtual classroom

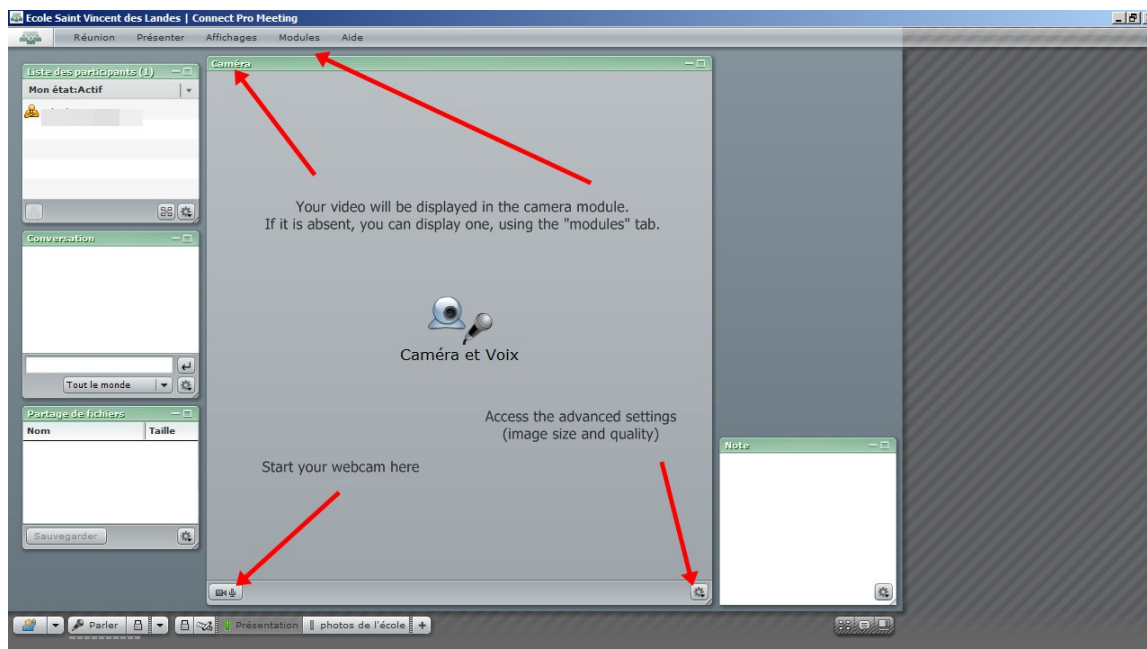
1° Display a “camera” window :

If there is no webcam/”camera” window displayed on the screen when you start your connection, you’ll need to add one.

For this : click on the “modules” tab in the toolbar, then tick the “camera et voix” line.

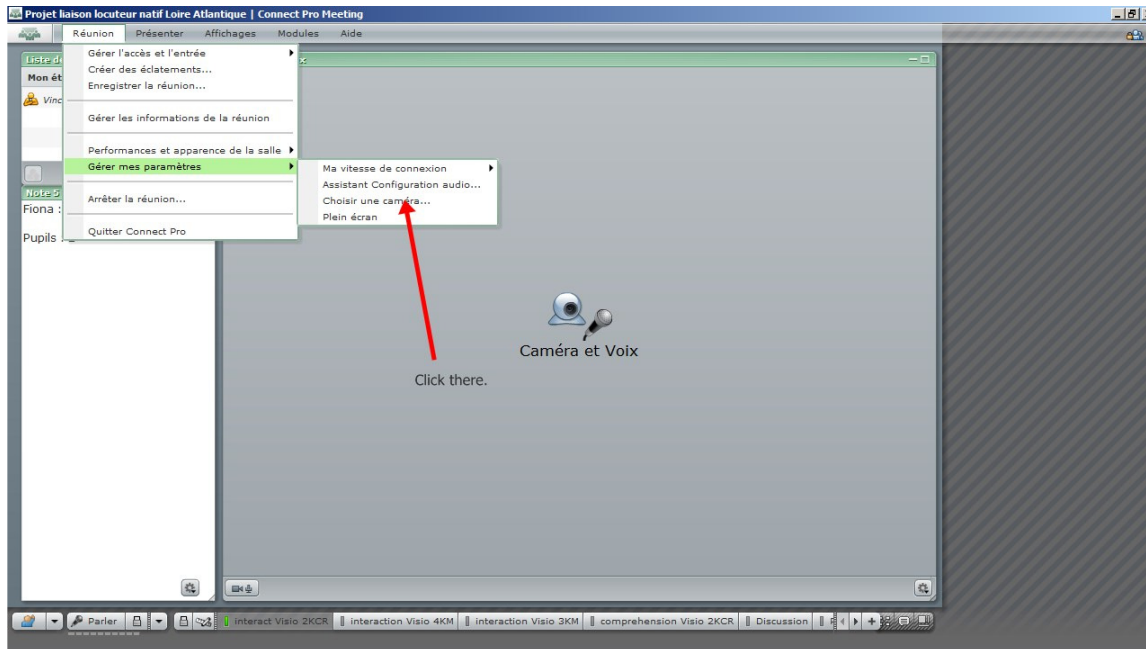


2° Start your webcam :



3° Select another webcam (if necessary) :

If you have different webcams connected at the same time, you might need to choose the one you prefer. You'll have to change the settings, by clicking the “reunion>gérer mes paramètres>choisir une camera” menu as shown below.



Just go through the wizard. If several webcams are connected at the same time, you should manage to choose the one you prefer.